



# CONNECTIONS

February 2016 Volume 16 Issue 4

Newsletter of the  
Structural Engineers  
Association of Oregon

SEAO  
9220 SW Barbur Blvd.  
No. 119  
PMB #336  
Portland, OR 97219  
Phone: (503) 753-3075  
E-Mail: [jane@seao.org](mailto:jane@seao.org)  
Web site: [www.seao.org](http://www.seao.org)

## IN THIS ISSUE: PAGE #

- President's Message 2
- SEAOSF Trade Show 3
- SEAOSF Mini-Seminar Schedule 4
- YMF Activities, New Members, Fishcamp Raffle for YMF, and Saturday Academy 5
- January Meeting Recap 6 & 7
- Seismic Events, NSCEA Winter Leadership Forum, and Ask a Question 8
- Employment Opportunities 8 & 9
- Engineers Week Flier 10 & 11
- NCSEA Leadership Forum Flier 12
- SEA NW Conference Flier 13

## Upcoming SEA0 Meetings and Events:

### Wednesday, February 24, 2016: SEAOSF Trade Show

Location: Monarch Hotel & Conference Center, 12566 SE 93rd Avenue, Clackamas, OR  
Mini-Seminar Times: 12:30 pm to 5:15 pm  
Trade Show Hours: 5:00 pm to 8:00 pm  
PDH Credits Available: 5  
See Pages 3 and 4 for additional information.

### Thursday, February 25, 2016: YMF Happy Hour

Location: TBD  
Time: 5:30 pm to 7:30 pm  
See Page 5 for additional YMF information.

### Thursday, February 25, 2016: 52nd Annual Engineers Week High School Banquet

Topic: Testing and Evaluating Water, Sanitation, and Hygiene Interventions for Reducing Infectious Disease in Developing Countries and Emergencies  
Guest Speaker: Daniele Lantagne, PE, Assistant Professor, Department of Civil & Environmental Engineering, Tufts University  
Location: Lloyd Center DoubleTree by Hilton Hotel  
Time: 6:00 pm to 8:30 pm  
Visit the website to become a sponsor: <http://www.oregonengineersweek.org/sponsorship/sponsor>, and see Page 10 for additional information.

### Saturday, March 12, 2016: YMF Winterhawks Game

Location: Veterans Memorial Coliseum  
Time: 7:00 pm  
See Page 5 for additional YMF information.

SEAO has a twitter  
account and can be  
followed at  
[@SEAOregon](https://twitter.com/SEAOregon).



**CONNECTIONS** is a monthly publication of the Structural Engineers Association of Oregon, published to disseminate current news to our membership and others involved in the profession of structural engineering. The opinions expressed reflect those of the author and, except where noted, do not represent a position of SEAO.

Send membership inquiries to:  
9220 SW Barbur Blvd.  
No. 119  
PMB #336  
Portland, OR 97219

## BOARD OF DIRECTORS

### President

*Gary Lewis*  
Lewis & Van Vleet  
Ph: 503.885.8605  
gjlewis@lvvi.com

### Vice President

*Kevin McCormick*  
Miller Consulting Engineers  
Ph: 503.246.1250  
kevin@miller-se.com

### Secretary

*Dmitri Wright*  
Cascade Engineering  
Ph: 503.846.1131  
Dmitri@cascade-structural.com

### Treasurer

*Mark Butler*  
Butler Consulting, Inc.  
Ph: 503.658.0200  
mark@bciengineering.com

### Director

*Pat Merriman*  
Masons Supply  
Ph: 503.234.4321  
pmerriman@masco.net

### Director

*Michelle Juarez*  
Miller Consulting Engineers  
Ph: 503.246.1250  
michelle@miller-se.com

### Past President

*Jennifer Eggers*  
KPFF Consulting Engineers  
Ph: 503.227.3251  
jennifer.eggers@kpff.com

### Executive Secretary

*Jane Ellsworth*  
SEAO Staff  
Ph: 503.753.3075  
jane@seao.org

## PRESIDENT'S MESSAGE: THE SEAO SCHOLARSHIP FOUNDATION NEEDS YOU

BY: GARY J. LEWIS, S.E.



As the SEAO Scholarship Foundation Trade Show is now only a couple of weeks away, I've been thinking

about the Scholarship Foundation and its future. The Foundation has traditionally had two main sources of funding: The Trade Show at the Monarch Motor Hotel in Clackamas, and individual or corporate donations. It used to be a common thing for members to donate small or large amounts to the Foundation every year, but that tradition has now dwindled to nearly nothing. I admit I have been deficient in my own support. The Foundation is still fiscally healthy, but not growing, and not able to expand the opportunities for education and support of future engineers. With the current growth of the work our profession does, it is vitally important to encourage young people to become engineers in order to feed our industry pipeline. The Trade Show has helped to keep the Foundation solvent, and your attendance at that event is very important by making it worth vendors' investments in signing up for booths. All proceeds from the Trade Show go to the Scholarship Foundation. Attendance is free for SEAO members, and your meal and two beverages are furnished by the vendors – you just need to have them mark off your tickets when you visit their booths.

The Trade Show is also a great opportunity to socialize and to network with other engineers and with the vendors.

Many of the representatives of the vendors' companies have been around for years and have become good friends over time. And you'll meet new vendors and engineers as well. There is a raffle for some great donated gifts, and you might be able to go home with some goodies in addition to PDH credits from the mini-seminars. Please attend on February 24 at the Monarch south of Clackamas Town Center.

SEAO gives out significant scholarships every year to students from Oregon's schools of engineering. Those monies help these excellent students to offset the soaring costs of a college education, and also make them and others who apply aware of our organization. The Scholarship Committee and the Scholarship Foundation Board have been looking at ways that the Foundation can help advance engineering education in elementary, middle, and high schools in our area, but need to practice good stewardship with the limited funds available. That brings me back to member and corporate donations. I get calls all the time asking me to donate to worthy causes, but cannot help them all. I have a couple of favorite charities that I support, but I intend to add SEAO to that list this year. Would you join me in making it a regular habit to remember SEAO in our giving? The student you help sponsor could someday be working alongside you.

– Gary Lewis

## SEAO COMMITTEES

### CODE ADVISORY COMMITTEE

Seismic

*Reid Zimmerman*—

*reid.zimmerman@kpff.com*

Wind

*Jim Riemenschneider*—

*jimr@vlmk.com*

Snow Load

*Andy Stember*—*andy@jasenginc.com*

Code

*Eric Watson*—*eric@millers-se.com*

Vintage Building

*Wade Younie*—*wyounie@*

*dci-engineers.com*

Special Inspections

*Ray Miller*—*ray@millers-se.com*

Cross-Laminated Timber

*Scott Nyseth* —

*scott.nyseth@stonewoodstructural.com*

### STRUCTURAL ENGINEERS

#### EMERGENCY RESPONSE (SEER)

*Shawn Stevenson*—

*sstevenson@morrisonhershfield.com*

### PROGRAM COMMITTEE

Monthly Meetings

*David Gilroy*—*dgilroy@strongtie.com*

*Peter Kahn*—*peter@equilibriumllc.com*

Awards

*Brynn Adkins*—*brynn@wdyi.com*

Golf Tournament

*Stephen Stenberg*—*steez07@yahoo.com*

Conferences

*Kevin McCormick*—*kevin@millers-se.com*

### ADVOCACY COMMITTEE

Website

*Seth Thomas*—*seth.thomas@kpff.com*

Legislative

*Paul Kluevers*—*pkluevers@gmail.com*

Engineers Week

*Michelle Juarez*—

*michelle@millers-se.com*

Young Member Forum

*Phillip Davis*—*phillip.davis@kpff.com*

### CONTINUING EDUCATION

#### COMMITTEE

Seminars

*Andy Stember*—*andy@jasenginc.com*

### MEMBERSHIP COMMITTEE

Newsletter

*Sarah McClelland*—

*smcclelland@moldedfiberglass.com*

Roster

*Jane Ellsworth*—*jane@seao.org*

### DELEGATES

NCSEA & WCSEA/NWC

*Ed Quesenberry*—

*edq@equilibriumllc.com*

*Seth Thomas (Alternate)*—

*seth.thomas@kpff.com*

## SEAO SCHOLARSHIP FOUNDATION ANNUAL TRADE SHOW AND MINI-SEMINARS WEDNESDAY, FEBRUARY 24, 2016

This event provides a good deal of income to the scholarship fund in large part due to the continued support and participation of the vendors. Our past shows have been a great benefit to both the vendors and the foundations. To continue this success, we need our members to support the show and its participants with their attendance. You will have the opportunity to view a variety of products and discuss problems and ideas. It is an excellent chance for new SEAO members to see what materials and products are available and currently in use in the field.

The mini-seminars will run from 12:30 pm until 5:15 pm, allowing vendors to go more in depth and offer more information to the members than might be available at the Trade Show alone. See page 4 for the list of mini-seminars available.

As always, donations — no matter how big or small — are very much appreciated. Remember that all proceeds will help the organization reach our scholarship goal. The Trade Show is free to all SEAO members and includes a meal and two beverages. We look forward to seeing you at this year's Trade Show!

**Date:** Wednesday, February 24, 2015

**Location:** Monarch Hotel  
12566 S.E. 93rd Avenue  
Clackamas, OR

#### **Schedule:**

**Mini-Seminars:** 12:30 pm to 5:15 pm (See schedule on page 4)

**Trade Show:** 5:00 pm to 8:00 pm

**Dinner:** Served at 6:00 pm

**Cost:** Complimentary dinner and two beverages for SEAO members  
\$25 per person for non-members

#### **Reservations:**

Please call or email Jane Ellsworth before noon on Monday, February 22, 2016.

You only need to RSVP for the Trade Show. It is not necessary for mini-seminars.

Phone: (503) 753-3075

Email to: [Jane@seao.org](mailto:Jane@seao.org)

#### **PDH Credit:**

SEAO recommends a maximum of 5 total hours of PDHs for the event. This includes a maximum of one hour for each seminar attended and one hour to those who register their attendance for documentation at the Trade Show. See Jane Ellsworth to sign-up specifically for that documentation.

**SEAO SCHOLARSHIP FOUNDATION TRADE SHOW  
MINI-SEMINAR SCHEDULE  
WEDNESDAY, FEBRUARY 24, 2016**

**CLACKAMAS ROOM**

1:45 – 2:45 PM

**Trus Joist / Weyerhaeuser**

*Engineered Wood Products and water born  
pressure-treated chemical applications*

Decks & Exterior applications (Parallam Plus solution)  
Mudsill and Termite prevention (StrandGuard solution)  
Fire Treating... Type III Const. (Flak-Jacket rim solution)

3:00 - 4:00 PM

**Scafco**

*Innovative Design Solutions for Cold-Formed Steel*

A brief history of the cold-formed steel industry, and how it has evolved to utilize high yield strength steel. SCAFCO presenter Brett Thompson, will introduce a number of value engineering products as well as innovative solutions for large span shaft wall designs.

4:15 – 5:15 PM

**Contech Services**

*Seismic Retrofit of Power Generating Facility*

Presented by Contech Services Inc., PGE and David Bugni and Associates

The River Mill Plant in Estacada OR, recently underwent a seismic upgrade of the 105 year old concrete structure. The structures that were evaluated and retrofitted include the powerhouse, gatehouse and unloading house. These three structures were evaluated in accordance with the requirements of ASCE 41-13, *Seismic Evaluation and Retrofit of Existing Buildings*. The evaluation found numerous seismic-related deficiencies, including inadequate roof diaphragms, shear walls, insufficient roof-to-wall connections and a lack of flexural strength in the walls for out-of-plane bending. Due to the historic nature of these buildings, structural rehabilitation solutions were not allowed to alter the basic architecture. The retrofit design included use of a FRP Strengthening System to provide additional tension, shear and moment capacity to the existing concrete buildings. In addition, steel braced frames were installed within one section of the gatehouse building to minimize building lateral deflections. This presentation will discuss the history of the building, details of seismic analysis, design of the retrofit solution and construction challenges.

**COLUMBIA ROOM**

12:30 – 1:30 PM

**TerraFirma Foundation Systems**

*Foundation Stabilization—Deep Foundation Systems*

Join us for a brief overview of deep foundation systems offered by TerraFirma Foundation Systems. Topics will include Helical Piles, Resistance Piles, Grouted Micro-Piles, Helical Tie-Backs, and Grouted Soils Nails.

1:45 – 2:45 PM

**Powers Fasteners**

*Designing Anchors in Accordance with ACI 318-11*

The presentation reviews code changes for adhesive anchors, installation, special inspection, and a design example in Powers Design Assist software.

3:00 - 4:00 PM

**CoreBrace**

*Deferred Submittal Requirements for BRBF*

This course will cover the requirements that an EOR should expect to see when reviewing a BRB submittal including some commonly missed items. A roadmap will be presented for navigating through the requirements of AISC 341 chapter F4 for BRBF requirements as well as AISC chapter K3 where the prequalification test requirements for BRBs are given. Information will be presented that will assist the practicing engineer to efficiently review BRB submittals for thoroughness and correctness.

4:15 – 5:15 PM

**RISA**

*Using RISA to Design Non-Building Structures*

This seminar will show engineers how to model non-building or industrial type structures in RISA-3D. This includes towers, tanks and open structures.

**VENDOR ADVERTISING**

SEAO is now accepting vendor advertising!

Cost of a full page ad running for one month:

\$250 - Members

\$350 - Non Members

For more information, contact Jane Ellsworth at [jane@seao.org](mailto:jane@seao.org).

## YOUNG MEMBER FORUM ACTIVITIES

BY: PHILLIP DAVIS

### Upcoming YMF Events:

Thursday February 25<sup>th</sup> – YMF Happy Hour

Location: TBD

Time: 5:30-7:30

Bring a friend or coworker and get to know some other young professionals in the area over food and drinks. Happy hour food provided by SEAO.

Saturday March 12<sup>th</sup> — YMF Winterhawks Game

Location: Veterans Memorial Coliseum

Time: 7:00

Once again the YMF will be getting a group of tickets and attending a Portland Winterhawks Game. This is the third year we have done this, and the two previous years have been a lot of fun. If you want to come, email [Phil.Davis@kpff.com](mailto:Phil.Davis@kpff.com) and let me know how many tickets you need. The cost is approximately \$20 per ticket and will be finalized once we have the final headcount.

### YMF Website Info:

<http://www.seao.org/committees/advocacy/ymf/>

Please visit our website for more information on YMF events and information.

## NEW MEMBERS

The newest members to join SEAO are:

Anthony Chay - Western Partitions

Derek Hardy - Simpson Strong Tie

Welcome New Members!!

## NEW FISHCAMP RAFFLE FOR YMF!

In the past, a raffle has been held each year for several at-large spots for the SEAO Fishcamp retreat held each fall (early October). This year the board has decided there will be a separate raffle for YMF members. Raffle tickets are earned by attending SEAO meetings and seminars throughout the year with the drawing held around May. This trip is a lot of fun and a great networking opportunity, especially for young engineers.

## SATURDAY ACADEMY



Saturday Academy's Apprenticeships in Science and Engineering program is going into our 27<sup>th</sup> year of connecting committed, creative high school students with full-time summer internships in science and engineering fields. We are excited to work with SEAO member companies to offer more internships to students from Oregon and Southwest Washington.

Each mentor designs the internships that advance their organizational goals, and rank candidates who apply for the position. ASE supports the internship over the summer, including processes like liability and school credit. The application process is competitive, with nearly 700 applicants for 161 positions; mentors are able to select for students with CAD or other design experience, programming and coding skills, and experience in specific areas such as robotics.

While ASE interns do join large companies and institutions such as the Bonneville Power Administration, Hewlett-Packard, and Mead & Hunt, we also value partnerships with smaller and emerging organizations. Regardless of size, all mentor organizations identify a project (or series of projects) through which interns can advance institutional goals via research, field work, product development, etc.

- Interns and mentors commit to eight full-time weeks over the course of the summer; mentors set the final schedule.
- Interns can work on a single project or on a series of related projects; the goal is that they have an opportunity to learn and gain early professional experience while making measurable contributions to a mentor's work.
- In addition to your goals and deliverables, each ASE intern develops an oral and a poster presentation for the end of summer Symposium.
- There is typically a \$3,200 program fee for the 296 hour internship. This includes a stipend to the intern, insurance and liability, travel to two ASE conferences, and the staff time for recruitment and support.

To submit a proposal:

<https://fs2.formsite.com/saturdayacademy/form529489916/index.html>

# JANUARY MEETING RECAP

BY: DEANNA AMNEUS

## Topic: Hyatt Regency Walkway collapse

Speaker: Glenn Bell, PE SE, CEO – Simpson Grumpertz & Heger (SGH)

This year marks the 35<sup>th</sup> anniversary of the Hyatt Regency walkway collapse in Kansas City on July 17<sup>th</sup>, 1981. The event is one that stands out in history and is often taught at universities. Glenn Bell, who was personally involved with the investigation of this failure, urges us that this is more than a simple failure of materials; he states that we owe it to the people who lost their life, our profession, and our society to understand the complete reasons for the collapse.

### The Event:

On a Friday evening in July, a concert was playing in the large four story volume atrium. The atrium connected a 35 story concrete tower to a four story function block. The concert was typical for the hotel to host, and was not the first event the atrium and walkways had seen. Two suspended walkways suddenly failed after a seemingly small amount of load and collapsed on the crowd below killing 114 people. Calls were made to the EOR and rescue workers worked through the night to recover.

After the event, SGH was one of many firms that investigated the failure. It was quickly found that the hanger rod failure (typically discussed in undergraduate classes) was not the sole reason for collapse. Because of this, Glenn's presentation was focused on the procedural problems rather than the engineering failures.



[http://commandsaftety.com/wp-content/uploads/sites/10/2011/07/F03W\\_St\\_81.jpg](http://commandsaftety.com/wp-content/uploads/sites/10/2011/07/F03W_St_81.jpg)

### Design and Construction:

The walkway was made of four 30ft segments and was approximately 120ft long. It was designed to connect the function block to the concrete tower. The walkways had W8 purlins and W16 stringers with composite deck and an expansion joint at the door. The walkways were suspended from threaded rods connected to transverse beams. The beams at the hangers were made of two MC8x8.5 channels welded together to form a box beam.

### Investigation:

There were several technical and procedural failures that ultimately lead to the walkway collapse. Immediately after the event, physical evidence was important to catalogue the mode and sequence of the failures. It was also important to catalogue the in service load and strength of the members. The NIST was called to be the lead investigator and served as the independent governmental investigator. The NIST collected all the testing materials, took input on how to test items, and disseminated the results from the tests. Finding the capacity of the connections was relatively straightforward and dynamic effects were negligible.

- NIST weighed each span for the total dead load at collapse
- A video was taken right before the collapse which was used to determine the exact live load
  - 56 people on the second floor
  - 7 people on the fourth floor
  - 63 people total on the suspended walkways
  - Design live load = 100psf
- Mock ups of the box beam were built with varying weld thicknesses
- Material samples were taken from walkways
- Investigators found that almost every connection was at ultimate capacity
- The fourth floor connection deflected, because the original design was under designed and had double the load on the connection

### Procedural Issues:

To fully understand the situation that the project was in, you must consider that the interest rates in 1981 were extremely high and put pressure on the construction industry to push their schedules. Sometimes this means the structure could be pushed before the architectural design. The owner, Hallmark, hired PBNMML for the architectural design of the Crown Center Hyatt Regency. The structural engineering firm was Gillum-Colaco, a well-known firm of the time.

### The Project Team

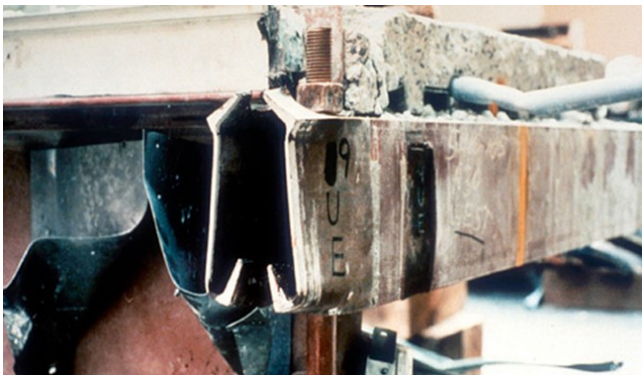
- Jack Gillum- Engineer of Record
- Dan Duncan- Project Manager
- Paul Chad- Project Engineer
- Ed Jantosik- Drafter
- Eldridge Construction- Contractor

All companies involved experienced turnover and brought in new subs during design and construction.

## JANUARY MEETING RECAP (CONT.)

### Steel Connection Design:

The famous hanger detail came about after being overlooked and misinterpreted. The original design showed a box beam welded at the toe of the channel with a continuous threaded rod. The design did not call for couplers and the nuts would have been threaded up the entire length of the rod. This construction issue was identified and the project manager had been informed. However, after a quick check of the shear of the box beam, the project manager informed the contractor the connection was acceptable but should be flagged for formal approval. On top of this, the connection was never fully designed. Loads were not transcribed on to the shop drawings even though the weld sizes and shape sizes were. The fabricator assumed it was designed and did not run any calculations. Later, the detail was challenged by an architect but the project manager defended it. Lastly, the drafter questioned the detail again but nothing was resolved.



[http://www.exponent.com/structural\\_failures/](http://www.exponent.com/structural_failures/)

### Potential Collapse Indicators:

During construction, the atrium roof suffered a partial collapse. Both design and construction contributed to this failure. So, after this event, the project manager had a younger engineer check the member capacities (but did not check the connection capacities). And, in addition to the in-house review, the owner hired an outside consultant to review the atrium steel members (but not the connections again). To make matters worse, the EOR had no field presence, and one of the testing agencies was fired. During construction of the walkways, other apparent issues surfaced but were disregarded, such as visible deflection in the hand rails and beams.

The following is a summary of the conditions that lead to the project's failure:

- Lack of complete design
- Shop drawing review turnover
- Threaded rod detail change
- Approval of shop drawings
- Several team members raised concerns without any follow through of the manager
- Atrium collapse failure
- Post construction deflections
- Fast track project
- Overloaded/inexperienced engineer
- Attitude towards a seemingly minor detail
- No EOR in field
- Formal processes bypassed
- Fabricator overloaded
- Testing agencies inconsistent

### Aftermath/Industry Response:

In the end, the EOR, Gillum, stated the construction quality was a failure. This project brought also to light some procedural issues anyone could overlook in a project.

- 100 million dollar lawsuit, and Gillum (EOR) and Duncan (PM) lost their license
- Duncan quit the industry
- Gillum was a born again evangelist for engineering ethics and taught engineering ethics at a university
- The Hyatt rebuilt the second floor walkway supported by very stout columns
- Responsibilities of connection design has been more clearly defined
- Shop drawing review and approval became more stringent
- East coast firms often have a peer review of their drawings while west coast designers have the critical eye of the building official



<https://media-cdn.tripadvisor.com/media/photo-s/02/fe/6d/2b/the-sheraton-kansas-city.jpg>

## SEISMIC EVENTS

### ASCE Webinars

Monday, March 7, 2016, 9:00 AM – 10:00 AM PST. **Large Wood Diaphragms in Heavy-Wall Buildings: New Understandings of their Seismic Behavior and Improving their Performance.**

Thursday, March 24, 2016, 8:30 AM – 10:00 AM PST. **Design of Lateral Load Resisting Systems in Masonry Buildings.**

### ATC Council Webinars

Wednesday, March 2, 2016, 12:00 PM – 1:30 PM PST. **NETAP Webinar: FEMA P-807 – Guidelines for Seismic Retrofit of Weak-Story Wood-Framed Buildings.**

Wednesday, March 23, 2016, 12:00 PM – 1:30 PM PST. **NETAP Webinar: FEMA P-50 and P-50-1 – Simplified Seismic Assessment and Retrofit Guidelines for Detached, Single-Family, Wood-Frame Dwellings.**

## ASK A QUESTION, GET AN ANSWER

Do you have a code question you would like to ask the Wind Committee or Snow Committee? SEAO is pleased to announce a simple way for Q&A's with technical committees. Email questions to [jane@seao.org](mailto:jane@seao.org), and SEAO will direct your question to the appropriate committee chair for a response. Questions and their answers will be made anonymous and available to the membership on the website [www.seao.org](http://www.seao.org).

## NCSEA WINTER LEADERSHIP FORUM MARCH 10 & 11, 2016

**SAVE THE DATE!** The NCSEA Winter Leadership Forum at the Coronado Island Marriott in San Diego, CA is in March. The Forum draws principals and leaders from a diverse group of structural engineering firms to engage in thought-provoking sessions, roundtables, and networking.

See page 12 for more information on the Forum programs and speakers.

## EMPLOYMENT OPPORTUNITIES

### AKANA

Structural Engineer  
Portland, OR

Akana is a Native American-owned multi-discipline consulting firm with a diverse portfolio of clients and projects throughout the United States offering a wide variety of services related to buildings, infrastructure, fisheries and transit facilities. We offer a stimulating work environment and great benefits in a culture that promotes growth. Learn more about our firm at [www.akana.us](http://www.akana.us). Akana currently seeks Structural Engineer with minimum of 5 years of professional experience. Experience in steel, concrete, masonry and timber, and willingness to work with non-traditional building methods and structures is important. Our focus on good client service requires excellent communication and project management skills. Familiarity with seismic analysis and AutoCad drafting with Revit a plus. Engineering degree from an ABET-accredited university and registration as a Professional Engineer preferred.

### LEWIS & VAN VLEET INC. ENGINEERS

Structural Engineer  
Tualatin, OR

Lewis & Van Vleet Inc. Engineers, located in Tualatin, Oregon is seeking licensed applicants with 2 plus years of experience in structural design and project management. At LVI, you will experience the benefits of a small firm along with a wide diversity and scale of engineering work. Our projects include commercial, office, industrial, educational, hospitals and medical offices, emergency response, multi-family, senior housing, and seismic studies, in addition to design of structural components and other smaller projects. You should have experience designing with a variety of building materials, as our work is diverse.

We offer a casual work environment, paid time off and flexible work hours and full benefits. Pay negotiable depending on experience. To apply, please submit a cover letter with goals to [gjlewis@lvvi.com](mailto:gjlewis@lvvi.com), along with a resume and references.



## EMPLOYMENT OPPORTUNITIES (CONT.)

### KPFF CONSULTING ENGINEERS

#### Experienced Structural Engineers and Entry-Level Structural Engineers

KPFF Portland is looking for Experienced and Entry-Level Structural Engineers who are motivated and interested in an opportunity for growth.

KPFF is about freedom. Freedom to work on what inspires you. Our engineers work on a vast spectrum of projects that are located around the globe: from anchorage of mechanical systems to complex, non-linear analysis of high-rise structures. We have the benefits of a large, stable firm but none of the red tape that comes with it. Providing first-class service to our clients is what we're about. We are a group of dedicated, friendly, collaborative, hard-working professionals. We are looking for exceptional engineers to join us. Please use the appropriate link below for full details. KPFF is an equal opportunity employer.

Experienced Structural Engineer Apply Here: [http://chc.tbe.taleo.net/chc05/ats/careers/requisition.jsp?org=KPFF\\_2&cws=63&rid=73](http://chc.tbe.taleo.net/chc05/ats/careers/requisition.jsp?org=KPFF_2&cws=63&rid=73)

Entry-Level Structural Engineer Apply Here: [http://chc.tbe.taleo.net/chc05/ats/careers/requisition.jsp?org=KPFF\\_2&cws=63&rid=151](http://chc.tbe.taleo.net/chc05/ats/careers/requisition.jsp?org=KPFF_2&cws=63&rid=151)

### HOLMES CULLEY

#### Structural Engineer San Francisco and Los Angeles, CA

Holmes Culley is a California based structural engineering firm dedicated to providing quality service and creative design solutions. As part of the New Zealand based Holmes Group, we are an international practice with over 300 professionals in six offices, providing engineering expertise to clients along the West Coast and throughout the Pacific Region. We are seeking structural engineers with 5+ years design experience for both our San Francisco and Los Angeles offices; M.S. degree in Structural Engineering and PE license are preferred.

Check us out at [www.holmesculley.com](http://www.holmesculley.com) and send your resume with cover letter to [hr@holmesculley.com](mailto:hr@holmesculley.com).

### VLMK ENGINEERING + DESIGN

#### Structural Engineer Portland, OR

VLMK Engineering + Design is seeking a Structural Engineer with 0 to 4 years of experience who is passionate about engineering and wants to broaden their experience working in a collaborative, multifaceted environment with a variety of project and building types. If you think this might be you, please see the full posting on our website at [www.vlmk.com](http://www.vlmk.com) for additional requirements and the benefits of joining VLMK. If you have questions, please feel free to contact Trent Nagele at [trent@vlmk.com](mailto:trent@vlmk.com).

### DCI ENGINEERS

#### Structural Project Engineer Portland, OR

DCI Engineers is a leading structural and civil engineering firm with a diverse portfolio of project types and clients. Our various offices along the west coast and in Texas provide unique and challenging opportunities for our employees to gain experience and develop expertise at a rapid pace. In addition, our vibrant company culture promotes a collaborative approach to design and focuses on providing a rewarding work environment for employees. DCI is also proud to offer a diverse array of benefits to those who are a part of our team. Please check out our website at [www.dci-engineers.com](http://www.dci-engineers.com) to learn more about our company culture, project types, and our focus on service, innovation, and value.

DCI Engineers is currently seeking a Structural Project Engineer with a minimum of three years of experience for our Portland office. Working knowledge of steel, concrete, wood and masonry design is desired. Our focus on client service makes good communication and customer service skills a must. The position will involve the design of all categories of seismic and gravity framing systems for every building and material type.

Structural Engineering degree from an ABET accredited university preferred. Please indicate the position and office location to which you are applying for in your cover letter.



*Celebrating over 50  
years of growing  
new engineers in  
Oregon &  
Washington*

## **52<sup>nd</sup> Annual E-Week High School Program**

**YOU are an essential part of the 52<sup>nd</sup> Annual Engineers Week Program.**

### **The 52<sup>nd</sup> Annual Engineers Week High School Program is coming:**

**Date: Thursday, February 25, 2016**

**Location: Lloyd Center DoubleTree by Hilton Hotel  
1000 NE Multnomah Street, Portland**

**Pre-Banquet Events: The Exhibit Hall & Student Seminars will be open from 4 – 6:15 PM for students, teachers and engineers.**

**The Annual Engineers Week High School Banquet begins at 6:30 PM.** All sponsor engineers are encouraged to attend – this is the best opportunity to talk to students and share what you love about being an engineer!

### **To participate at E-week:**

- Send in the attached form and a sponsor check (see details on next page).
- Email Tova Peltz at [tova.r.peltz@odot.state.or.us](mailto:tova.r.peltz@odot.state.or.us) for online registration and payment information.
- We will contact you with additional day of the event information.

***THANK YOU ! We look forward to seeing  
you in February!***

# Engineers Week Sponsorship Levels

		Sponsor Included on E-week Web and Facebook Pages	Title Sponsor on all Event Publications*	Official Sponsor of College Seminars	Number of Sponsored Students	# Banquet Dinner Tickets for Your Organization
Platinum	\$2,000	✓	✓	✓	20	15
Gold	\$1,000	✓	✓	.	10	10
Silver	\$500	✓	.	.	5	5
Individual	\$75	.	.	.	1	1

\*Title sponsors will be included on all event publications if program support is committed by December 31, 2015.

## E-week Registration

Company Name: \_\_\_\_\_

Contact Name: \_\_\_\_\_

Email Address: \_\_\_\_\_

Phone Number: \_\_\_\_\_

Sponsor level - check one:

- Platinum \$2,000
- Gold \$1,000
- Silver \$500
- Individual \$75
- I cannot attend, but I would like to sponsor a student - \$40

Send this form and a sponsor check payable to “ASCE Oregon Engineers Week” to: Tova Peltz, c/o ODOT Construction, 6000 SW Raab Road, Portland OR 97221.

*The Engineers Week High School Program is a tax-deductible program affiliated with the American Society of Civil Engineers, a 501c3 non-profit organization.*

# Save The Date

# 2016 WINTER LEADERSHIP FORUM



MARCH 10 & 11 Coronado Island Marriott San Diego, CA

The NCSEA Winter Leadership Forum draws principals and leaders from a diverse group of structural engineering firms to engage in thought-provoking sessions, roundtables, and networking. This two-day Forum will feature top-notch, thought-provoking speakers and case studies.

In 2016, the Forum will focus on managing risk professionally, collaboratively and transparently. The first day will consist of interactive discussions on managing the various risks every firm faces every day. The second day will be a discussion of the various risks faced on projects and some of the preventative measures you can take. Three to four presentations of actual claims will be presented, with a discussion of what went wrong (if anything) and how some of these claims could have been avoided.

## ON THURSDAY, LOOK FOR:



Legal advice, as well as give and take, on how to achieve your business objectives while minimizing the risks of litigation. Topics will touch on labor and employment law for managers, discrimination in the workplace, leveraging the hiring process to find the best candidates, background checks, best practices for conducting internal investigations, and more.  
Speaker: Attorney Staci Ketay Rotman

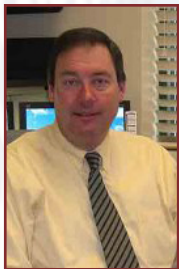
**Staci Ketay Rotman** is a partner in the Labor & Employment Practice Group at Franczek Radelet P.C. She advises and represents employers in all aspects of labor and employment law and has represented clients before federal and state courts and administrative agencies, as well as in arbitration proceedings. Staci has extensive experience in connection with employment discrimination, sexual harassment, wrongful discharge, leave management, employee accommodation, restrictive covenants, employment related torts, employment policies and agreements, reductions in force, I-9 compliance and other workplace issues.

A Q&A Workshop-type format on the pros, cons, and financial implications of the various project delivery methods. This will be an informative 'conversation' about specific advantages/disadvantages, where you will have the opportunity to take away information tailored to your particular needs. Case examples for each delivery method will be covered, as time permits.  
Speaker: Dale Munhall, AIA



**Dale Munhall, AIA**, is Director of Construction Phase Services for Leo A Daly at their national headquarters office in Omaha. He is a registered architect, certified by the National Council of Architectural Registration Boards (NCARB), and is a LEED Accredited Professional. During his four decade career he has developed a unique perspective on the entire project delivery process via his early experience as a construction manager and field superintendent and as a real estate broker and part-time building code official. He actively serves on committees of the American Institute of Architects (AIA) and the Design-Build Institute of America (DBIA), and he has written and made national presentations on various aspects of design and construction.

## ON FRIDAY, LOOK FOR:



An exploration of the differences in E & O insurance policies and how to conform to insurance requirements. Have your questions answered on Best Ratings, prior acts coverage, pre-claim assistance and cost, whether coverage is limited to the settlement amount if the insured refuses settlement, and more.

Speakers: Dan Bradshaw, insurance agent, and Craig Coburn, attorney.

**Dan Bradshaw** is president at Benchmark Insurance Agency in Bountiful, Utah, and a past president of the Professional Liability Agents Network (PLAN). He specializes in risk management for designers, architects, and engineers, contract review, and professional liability/errors and omissions insurance.

**Craig Coburn** is an attorney and shareholder at Richards Brandt Miller Nelson. He is chair of the firm's construction industry services and mediation/arbitration services groups and teaches at the University of Utah College of Engineering.



Claims Sharing: Three firms will present what happened to them when they were sued for professional negligence. They will tell their stories about the projects, the allegations, the outcome and the lessons learned; but the outcome and lessons learned will not be revealed until after WLF attendees have had their own opportunity to predict the outcome.

Moderator: John Tawresey, SE

Speakers: Seasoned [been sued] structural engineers and defense counsel

**John Tawresey** has over 47 years of experience as a structural engineer and was the Chief Financial Officer at KPFF Consulting Engineers for 38 years. He participated in the growth of KPFF from a 50-person firm to the 900-person firm that it is today. He is also a past president of the Structural Engineers Risk Management Council (SERMC) and past chair of the SERMC Claims Committee.



## **2016 Western States Roundup – NW SEA Conference**

### **Schedule of Events**

#### **Wednesday 8/3**

The Element Hotel in Downtown Bozeman

1 – 5 pm: Western States and NW Delegate Meetings

5 pm – 8 pm: Welcome Reception



#### **Thursday 8/4 & Friday 8/5**

Montana State University Ballrooms

8:30 am - 5 pm : Breakfast – Lunch – Vendors – Seminars!

Thursday 6 pm – 9 pm: Key Note Speaker Dinner, Bobcat Stadium Skybox (TBD)

9pm – 12pm: Music on Main Street, Downtown Bozeman!

Friday 6 pm – 10 pm: BBQ Dinner – Music – Views – Fun! (Location TBD)

**Saturday 8/6 – Fly Fishing, Rafting, Picnic – Sweet Pea Arts Festival, Yellowstone Park...  
TBD.**

**Registration Information Coming Soon... look for announcements!**